

H2O-NO PRINTABLE TILES

This document includes all the tiles needed for the H2O-NO expansion to Lava Run. Like the classic craftable version, print out the pages of this document on a similar sticker paper, or sturdy card-stock. For added stability, attach each printed page to a chipboard or cardboard by printing with sticker paper or glueing to a piece of cardboard. Finally, cut out the printed shapes to remove the white excess and separate tiles. (There should be 14 Bonus Tiles, and 4 Dino Tiles)

Keep in mind, These added dinos and tiles all adhere to the rules included in the classic Lava Run rulebook. These are not meant for a first play through. Additionally, these bonus tiles should be added into the game gradually as you learn the rules and playstyles of each tile. While you *can* add them all in at once, it may be very overwhelming for your dinos, as each one adds a certain level of chaos and calamity to the game!

H2O-NO Rulebook available at LavaRun.com/H2ONNO

BONUS DINO TILES

*These tiles should be kept seperate from the rest of the tiles. The black lines are used as cutting guides.



Bonus tiles on the next page.

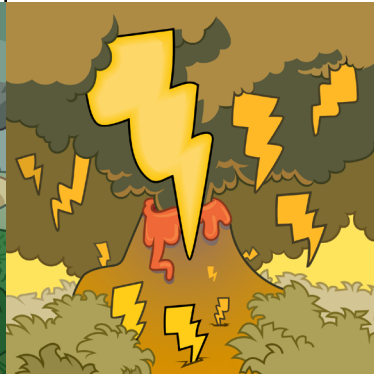
Tsunami



Tornado



Thunderstorm



Hurricane



Rainstorm



Tar Pit



Guisser

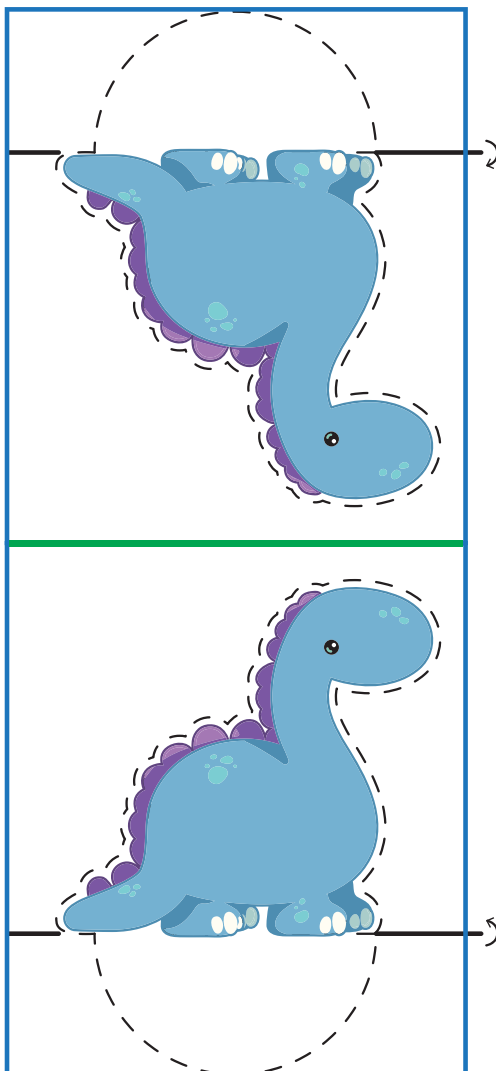
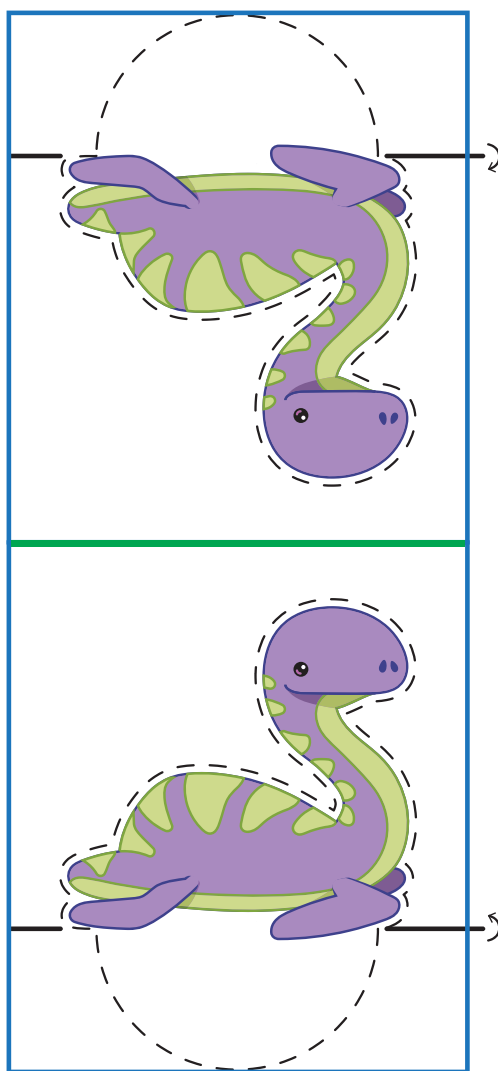
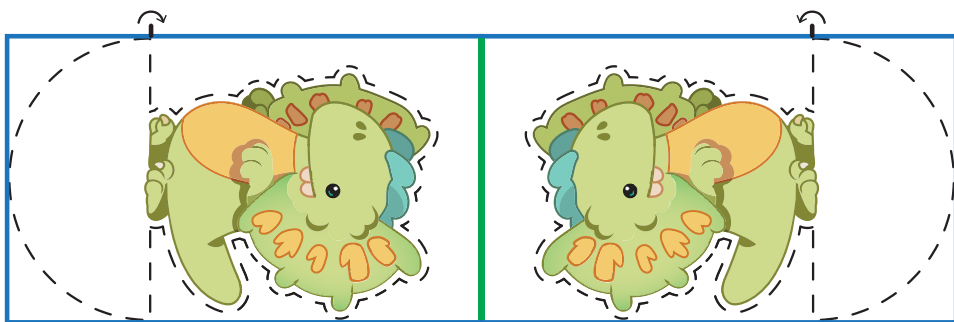
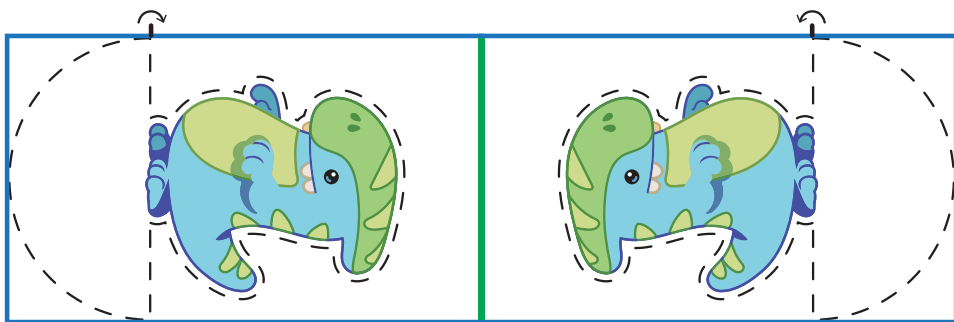


Flood



Overflow





H2O-NO PRINTABLE DINO SET

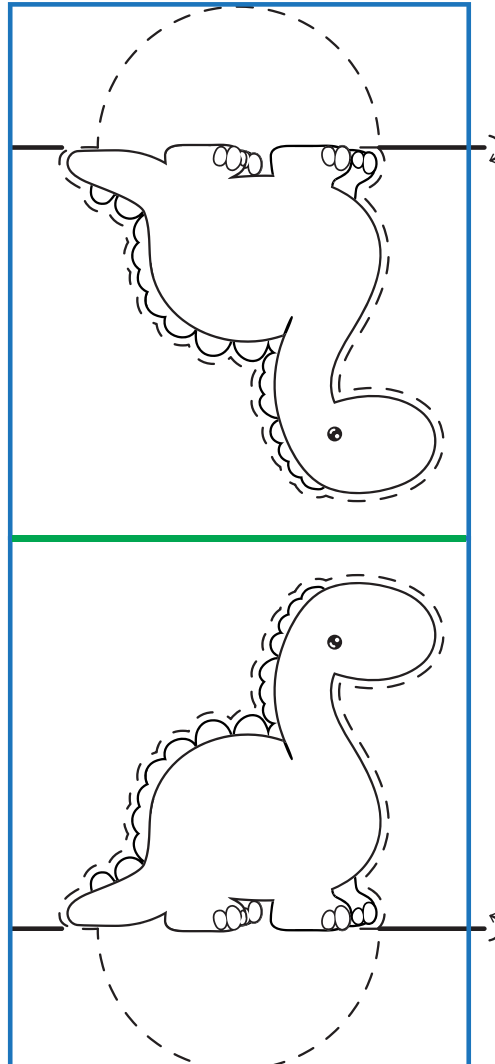
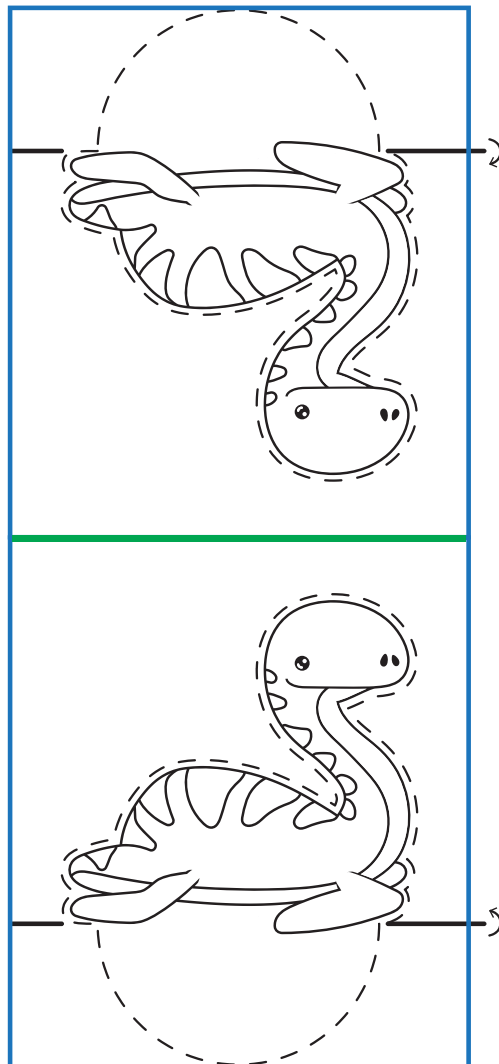
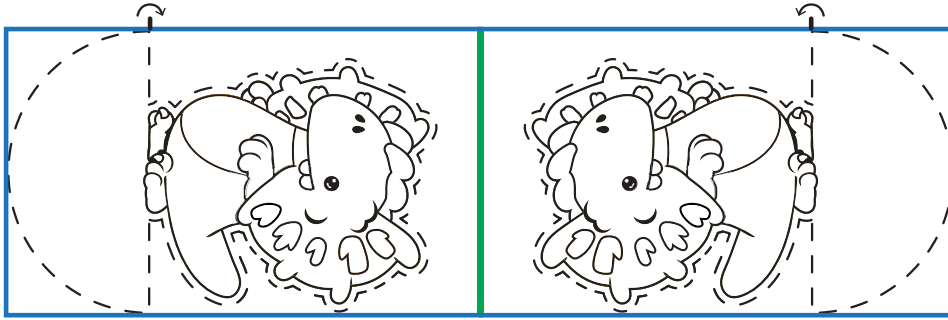
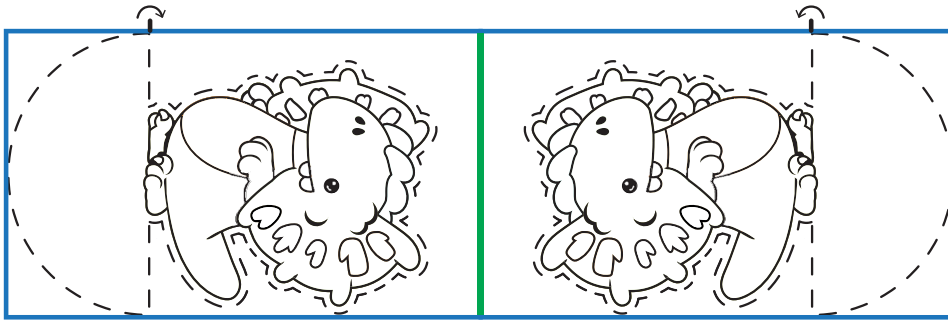
Full Color Set

Step 1: Cut out full blue box.

Step 2: Paste the back section containing the dinosaur, leaving the half circles unpasted. Fold in half at the green bar in the center of the cut out box so that the dinosaurs line up.

Step 3: Cut around the dotted line.

Step 4: Fold the unpasted half circles the bottom out to create a platform to keep your dino standing.



H2O-NO PRINTABLE DINO SET

Color-In Set

Step 1: Cut out full blue box.

Step 2: Paste the back section containing the dinosaur, leaving the half circles unpasted. Fold in half at the green bar in the center of the cut out box so that the dinosaurs line up.

Step 3: Cut around the dotted line.

Step 4: Fold the unpasted half circles the bottom out to create a platform to keep your dino standing.